

# Goldilocks

Mukonesi: Catherine Groenewald

Yo shandulwa u bva kha ngano ya sialala  
ya Scandinavian

**Themo 2 – Bugu Khulu 5**



Tshivenda

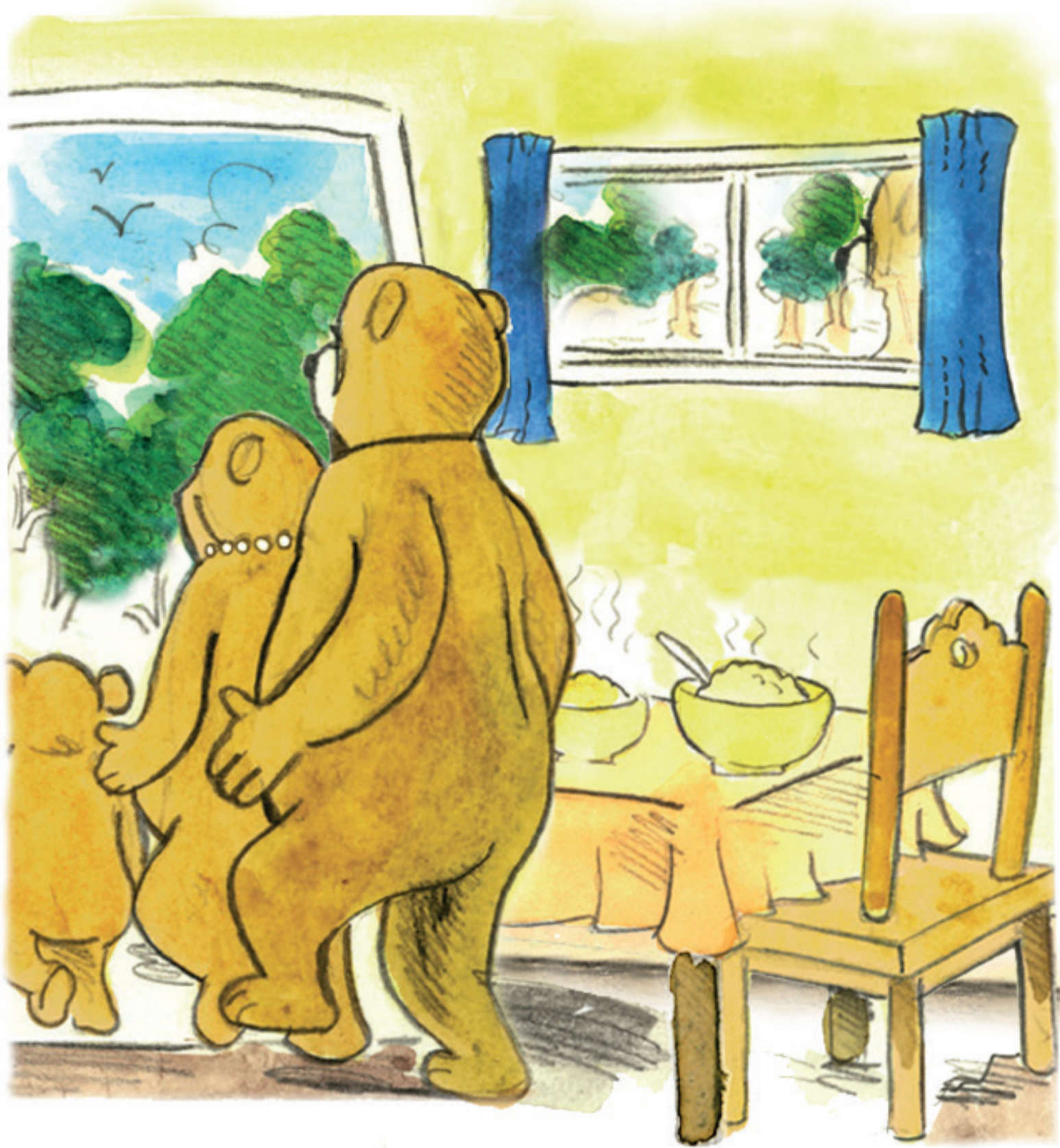


**GAUTENG PROVINCE**  
EDUCATION  
REPUBLIC OF SOUTH AFRICA

**GGT 2030**  
GROWING GAUTENG TOGETHER



Kalekale ho vhuya ha vha na  
zwivhingwi zwiraru: Tshivhingwi  
tsha Tshiduna, Tshivhingwi  
tsha Tshisadzi na Nwana wa  
Tshivhingwi. Zwo vha zwi tshi  
dzula kha kuḽu kuḽuku ḽakani.



Nga mañwe matsheloni  
Tshivhingwi tsha Tshiduna  
tsho ri, “Mukapu washu u kha  
ḡi fhisesa. Kha ri thome ri  
bve ri tshimbile musi u tshi  
kha ḡi fhola.”



Goldilocks na enevho o vha a  
tshi khou tshimbila. O mbo  
ḡi vhona nnḡu ya zwivhingwi.  
O khokhonya, a vula a mbo ḡi  
dzhena nga ngomu!



Goldilocks o mbo ɔi thetshela  
mikapu yoṭhe. A eḡela kha  
mimbete yoṭhe. O mbo ɔi ri,  
“Ndi takalela hoyu mmbete.  
Wo linganela zwavhuḡi.”  
Goldilocks o mbo ɔi ya u eḡela.



Zwiḽa zwivhingwi zwiraru zwo  
mbo ḽi vhuya hayani.



Zwo amba zwo  
halifha zwa ri,  
“Ndi nnyi we  
a vha a tshi  
khou ḽa mukapu  
washu?”

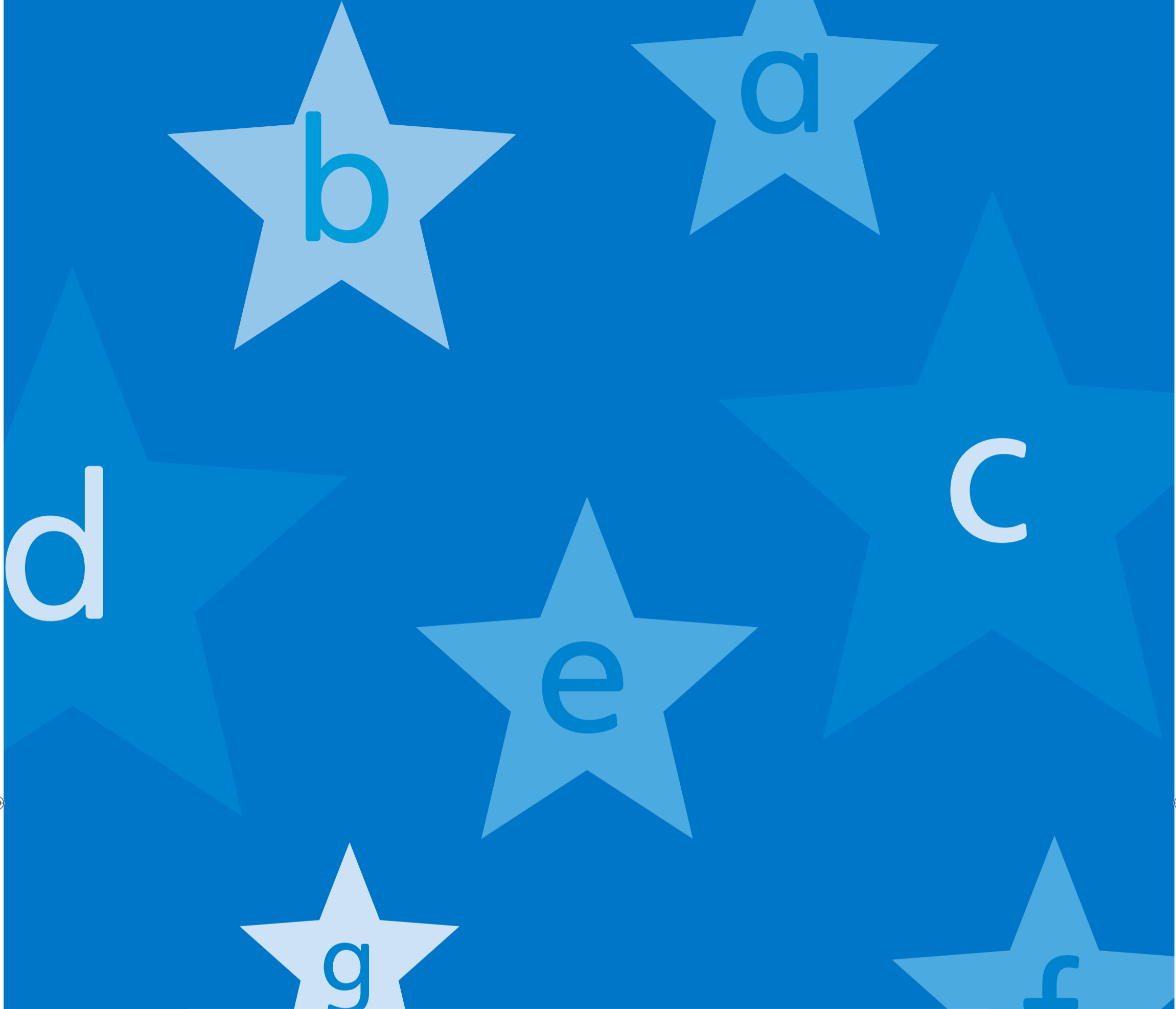
Ḽwana wa  
Tshivhingwi o  
ri, “Ndi nnyi we  
o vha o eḽela  
mimbeteni  
yashu?”



“Khoyu!”



Goldilocks o mbo ɔ̣i farwa  
nga nyofho khulu! O mbo  
ɔ̣i fhufha kha mmbete wa  
Nwana wa Tshivhingwi a ɔ̣a  
fhasi. Zwivhingwi izwi a zwo  
ngo tsha dovha zwa mu  
vhona hafhu.



Iyi Bugu Khulu yo bveledzwa nga Wordworks.  
Nyolo nga Jacqui Botha. Phindulelo nga Maanda Khukhusela.  
Dzudzanywa nga Mpho Makwarela na Maanda Khukhusela.

Bugu Khulu yo neshedzwa laisentsi nga fhasi ha Creative Commons Attribution 4.0 License (<http://creativecommons.org/licenses/by/4.0/>).

